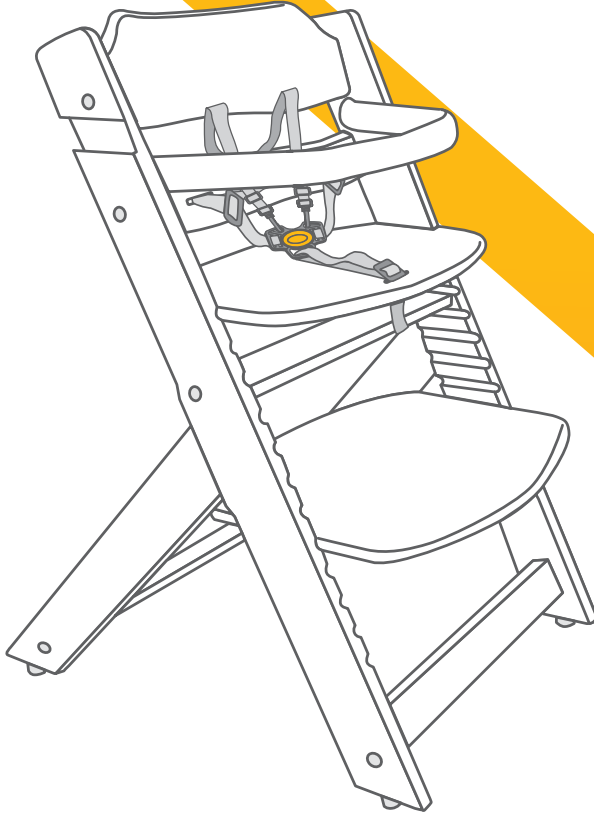


TIMBA HIGHCHAIR

Suitability depending on configuration:

- 6 months to 15kg (approximately 3 years)
- 15kg to 30kg (approximately 10 years)



**IMPORTANT! KEEP FOR
FUTURE REFERENCE**

Illustrations and designs may vary.

CONTENTS

Warnings 3

Components List 4

ASSEMBLING THE HIGHCHAIR

Assembly Instructions 6

USING THE HIGHCHAIR

Configuring Highchair for 6 Months to 15kg 17

Using Safety Harness 24

Configuring Highchair for 15kg to 30kg 27

CARE AND MAINTENANCE

Care and Maintenance 31

CONTACTS

Customer Service 32

These instructions detail the safe use, assembly and maintenance of your product. Please read these instructions carefully and ensure that they are followed at all times. Failure to do so could result in serious injury or death.



WARNING TO AVOID INJURY OR DEATH:

FOLLOW THE MANUFACTURER'S INSTRUCTIONS.

DO NOT LEAVE CHILDREN UNATTENDED.

**THE HARNESS MUST ALWAYS BE USED AND CORRECTLY FITTED.
MOST INJURIES FROM HIGHCHAIRS ARE CAUSED BY FALLS.**

**POSITION THE HIGHCHAIR AWAY FROM SOLID STRUCTURES AND
BENCHES TO AVOID INJURIES CAUSED BY FALLS AND BY ACCESS
TO DANGEROUS ITEMS.**

Our products have been carefully designed and tested with the safety and comfort of your child in mind.

This item is designed to be used by a child who can sit up unaided, aged 6 months to 10 years / **30kg**, according to configuration.

The child should be secured in the highchair at all times by the restraining system.

It is recommended that the highchair be used only by children capable of sitting upright unassisted.

Not recommended for a child under 6 months old.

Ensure that the highchair is placed on a flat, even, horizontal and stable surface.

Do not elevate the highchair on any structure or table.

To reduce the risk of injury, position the highchair away from furniture, walls, hot surfaces, hot liquids, window coverings, window cords and electrical cords. Position the highchair away from furniture when the chair is not being used at a table with the tray removed.

Do not raise, lower, fold or move the highchair when a child is in it.

Make sure children and their fingers are clear of any moving parts.

Do not allow children to stand on the seat, as the highchair may become unstable.

To avoid danger of suffocation, keep any plastic bags away from babies and children.

Regularly inspect the highchair for any part that is loose, broken, torn or missing.

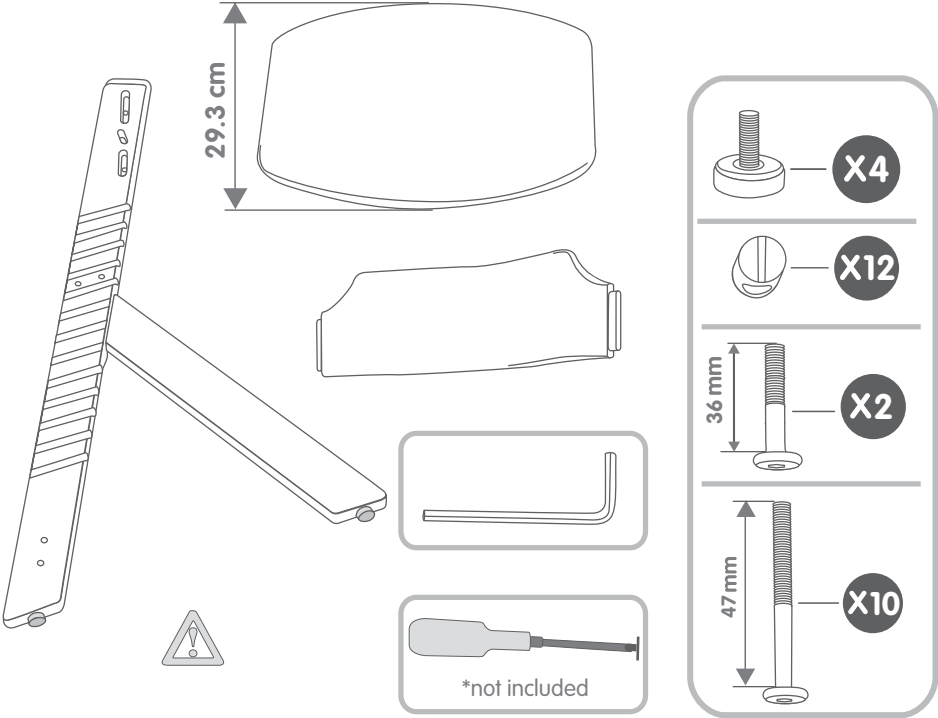
Attend to the problem as soon as it is noticed.

Do not use the highchair if it is not working correctly and immediately seek repair.

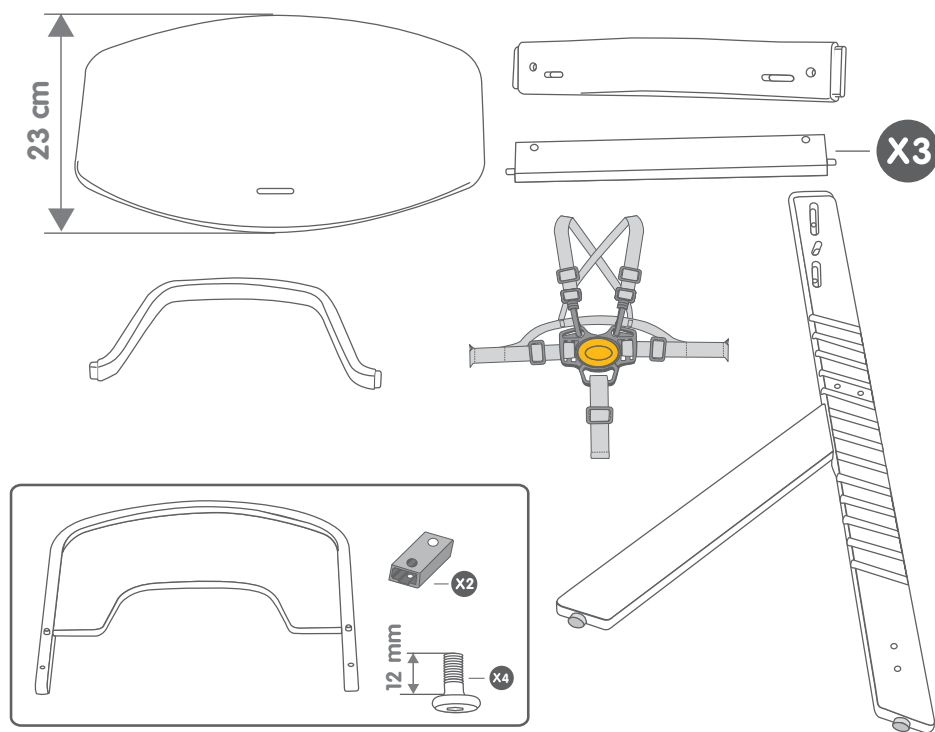
Use only those accessories which are supplied by Dorel Australia and approved for use with this highchair.

This product is not intended for commercial use.

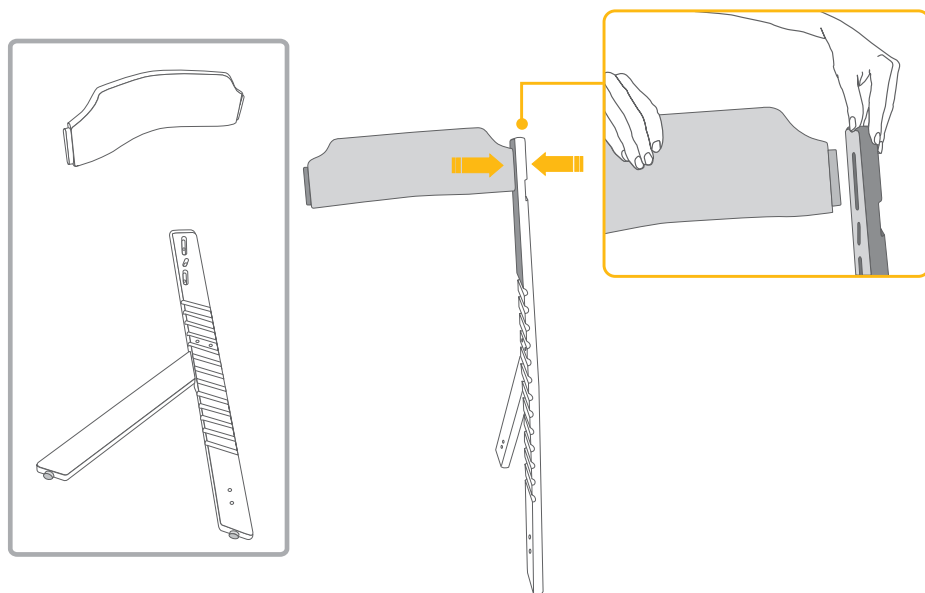
Components List



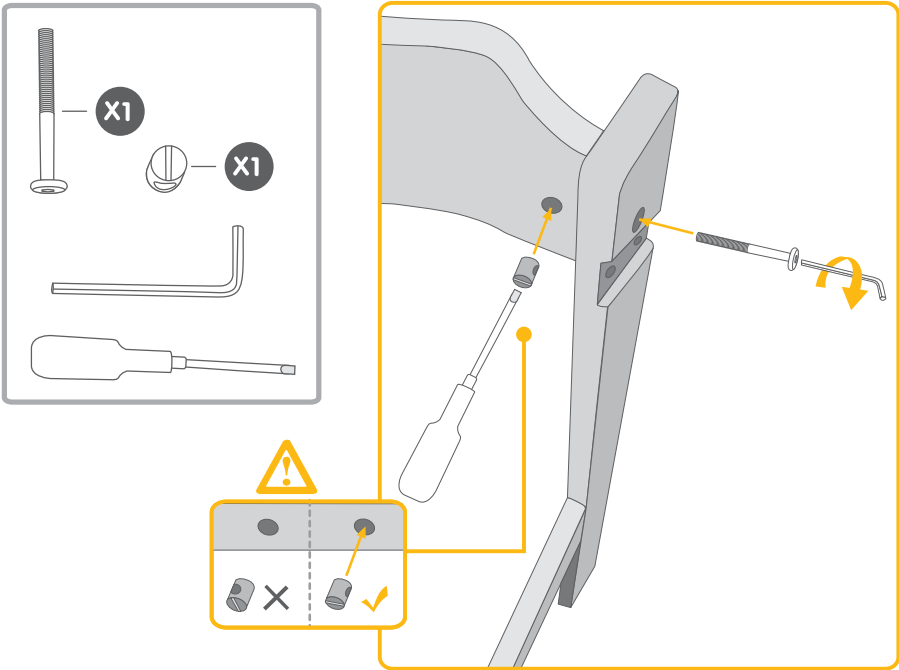
Components List



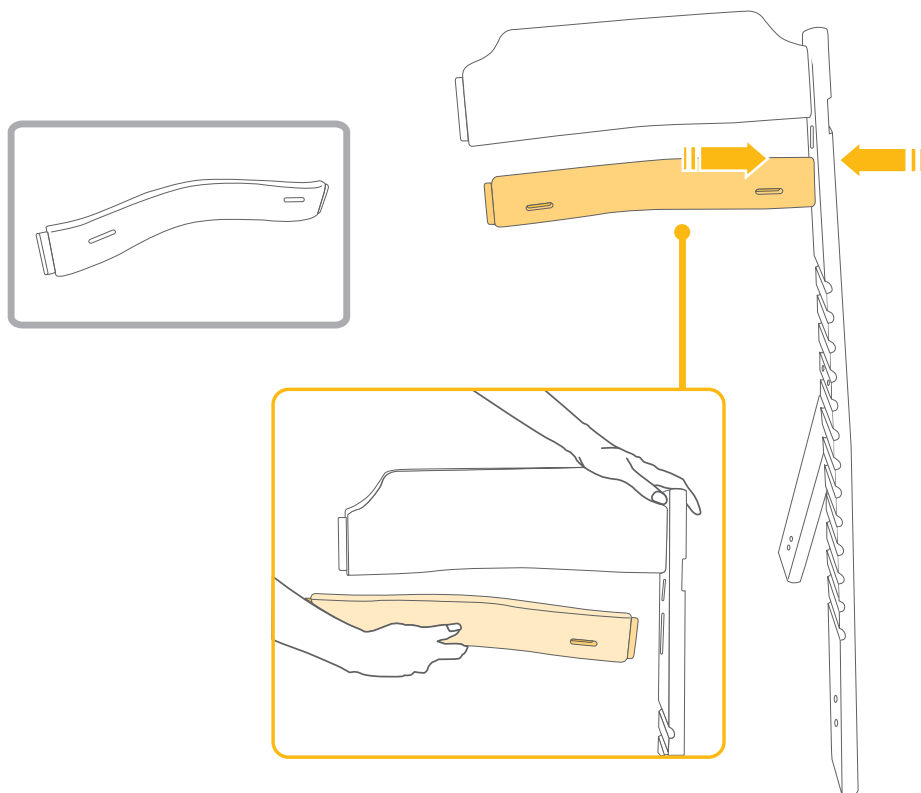
Assembling the Highchair



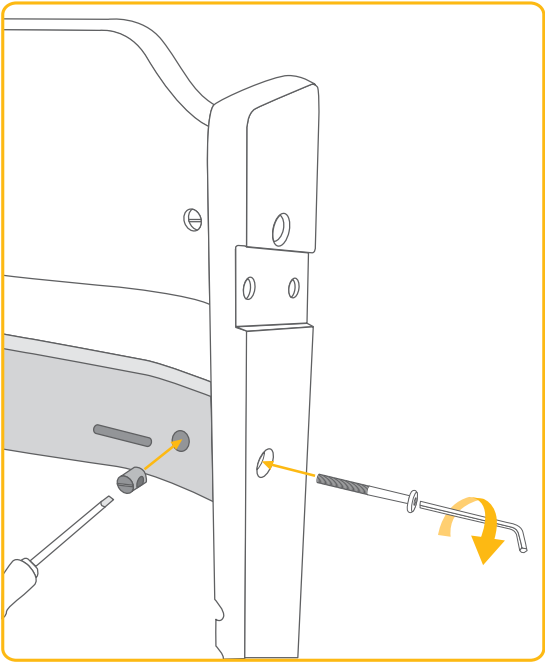
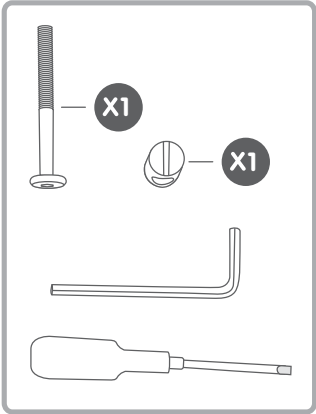
Assembling the Highchair



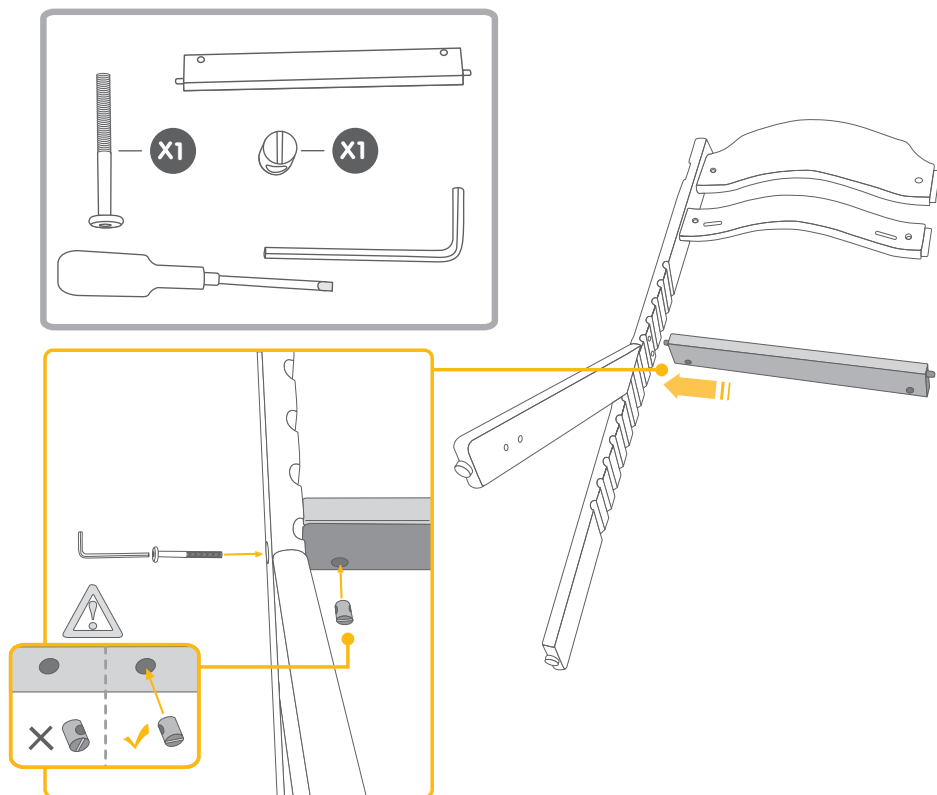
Assembling the Highchair



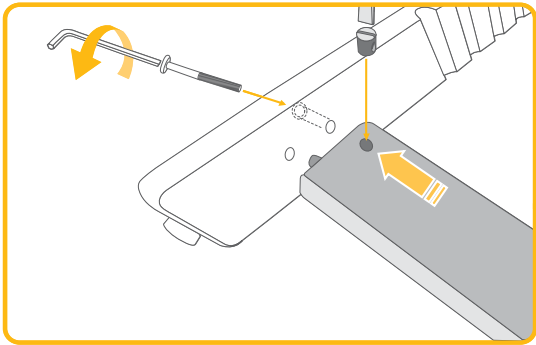
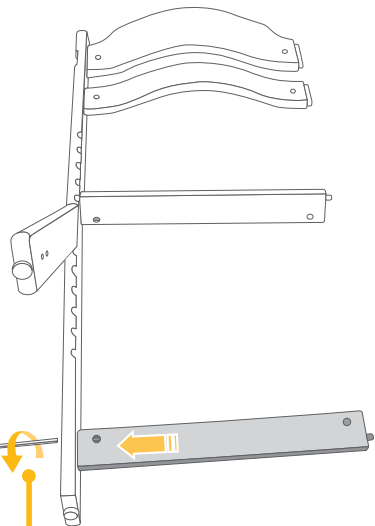
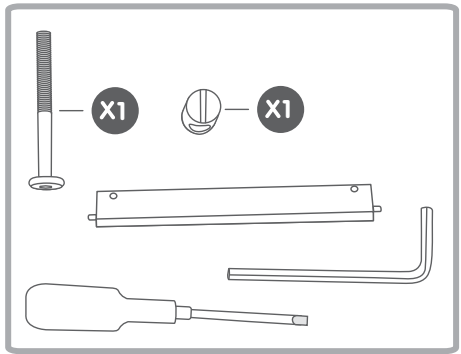
Assembling the Highchair



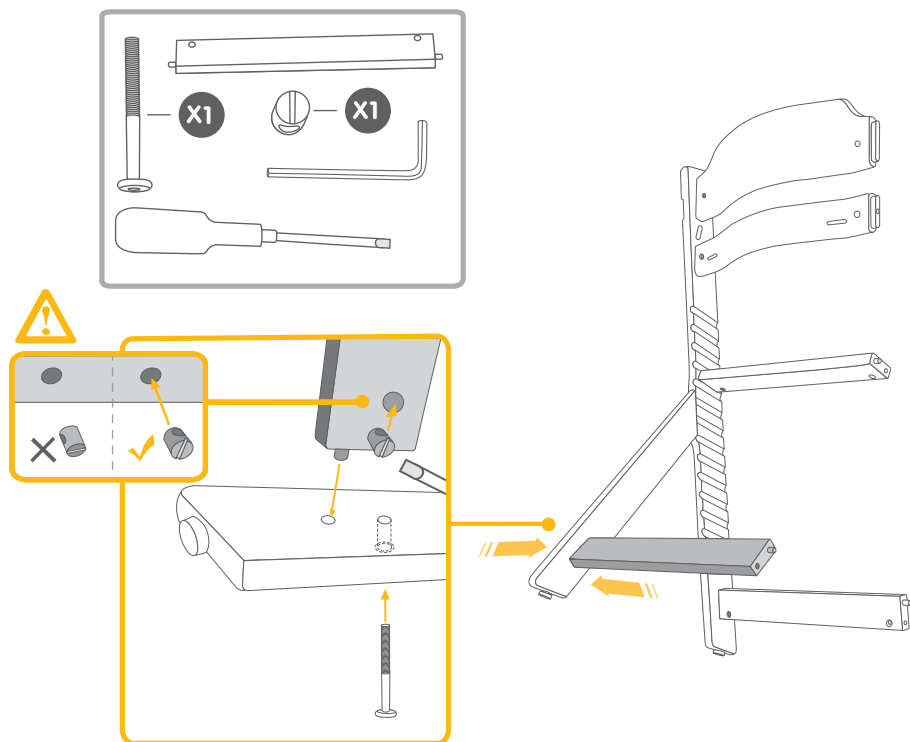
Assembling the Highchair



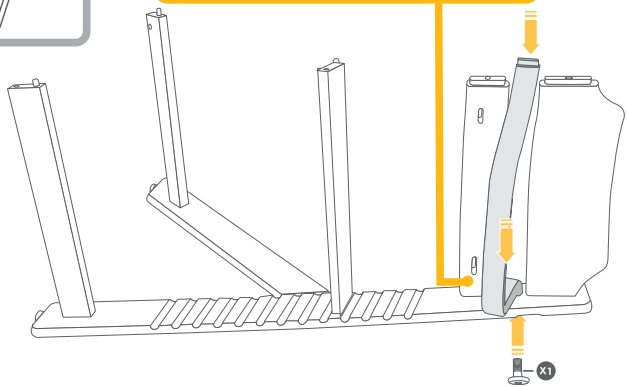
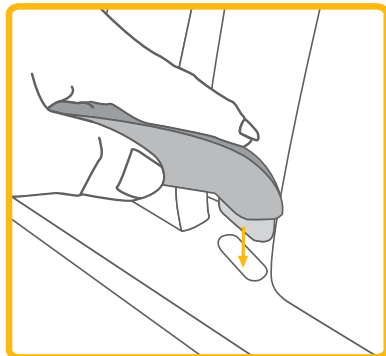
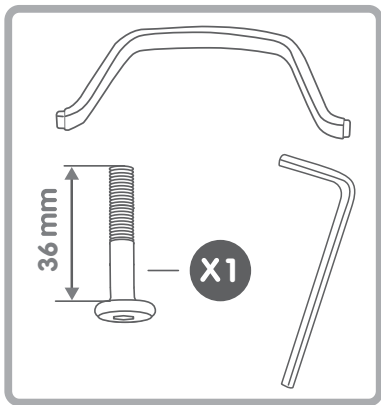
Assembling the Highchair



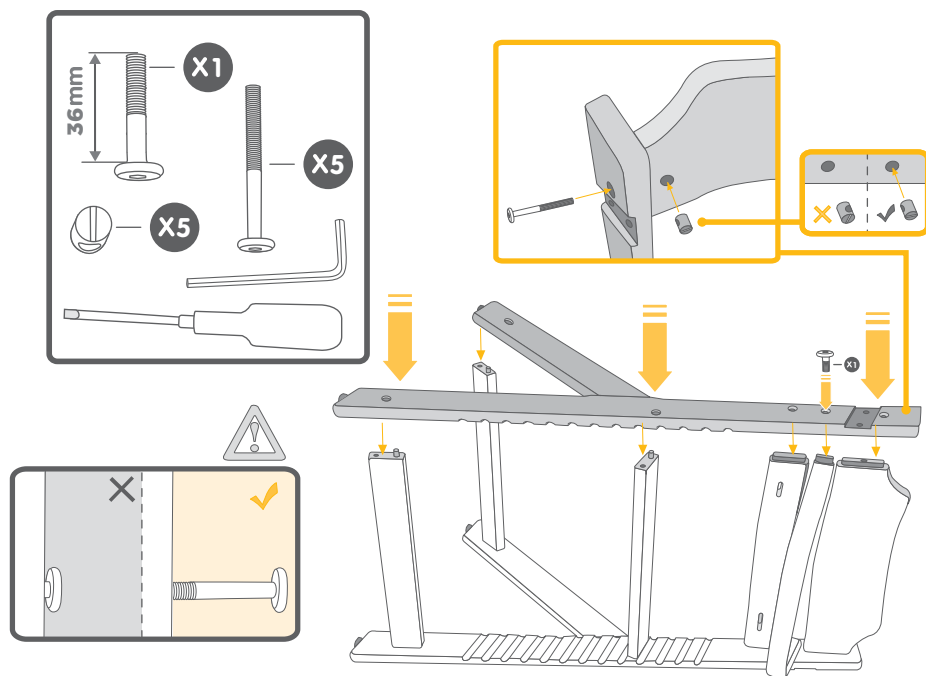
Assembling the Highchair



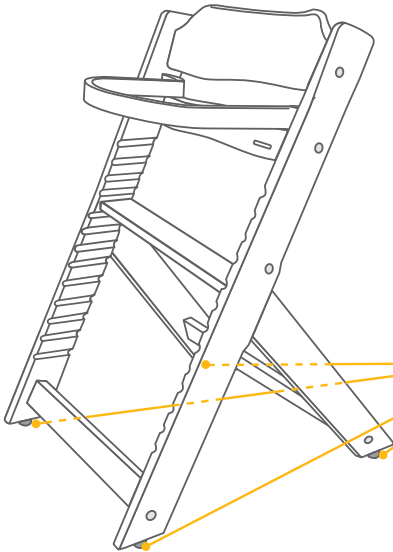
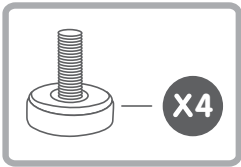
Assembling the Highchair



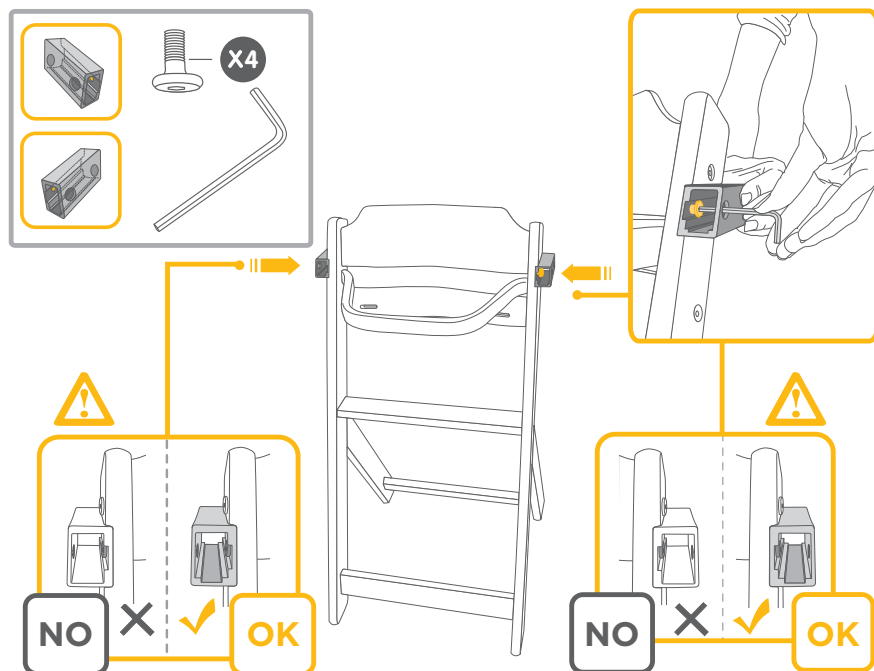
Assembling the Highchair



Assembling the Highchair



Assembling the Highchair



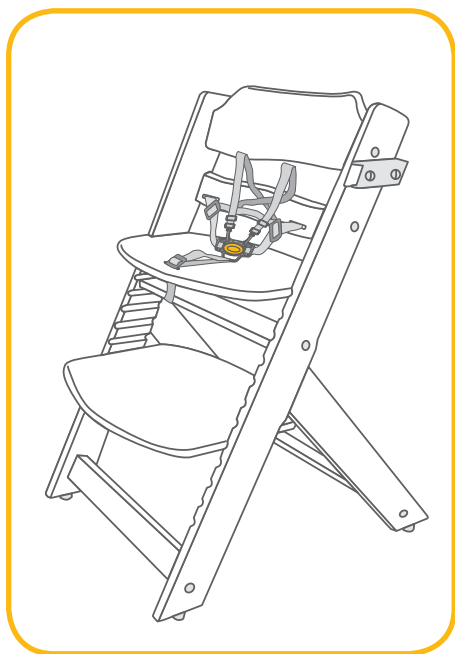
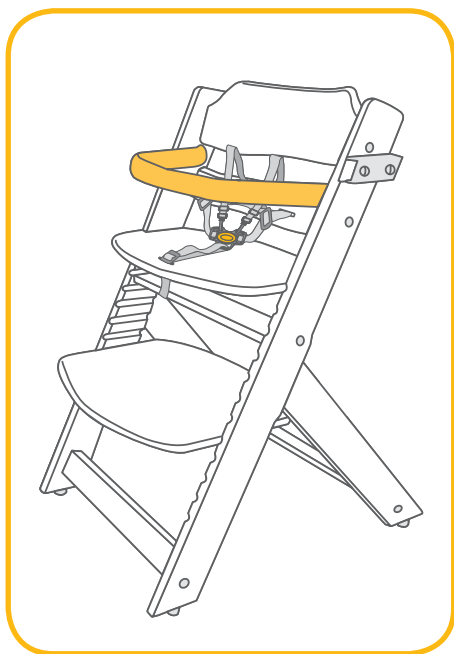
Using the Highchair



6m - 11kg

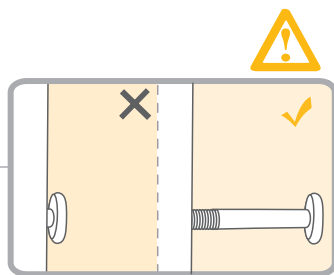
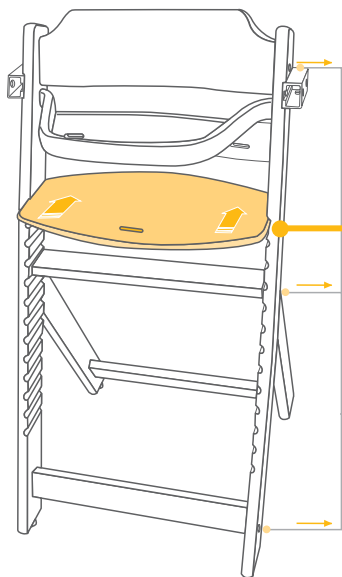
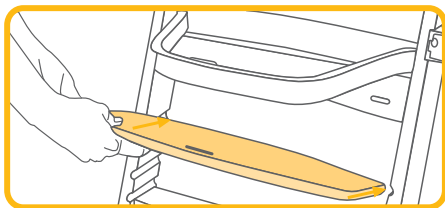
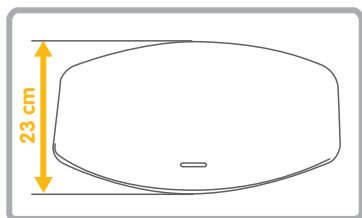


11kg - 15kg



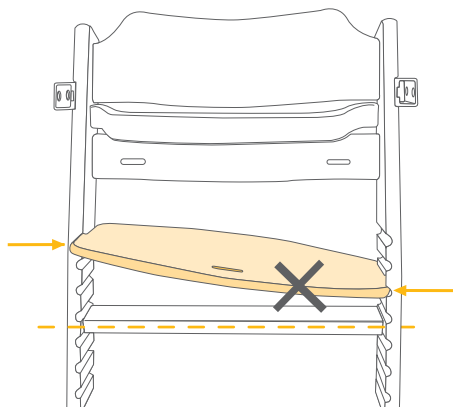
SECURE THE CHILD IN THE HARNESS AT ALL TIMES.

Using the Highchair

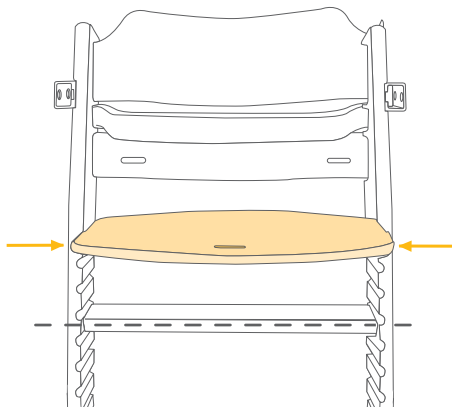


Using the Highchair

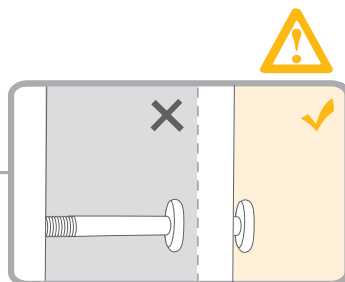
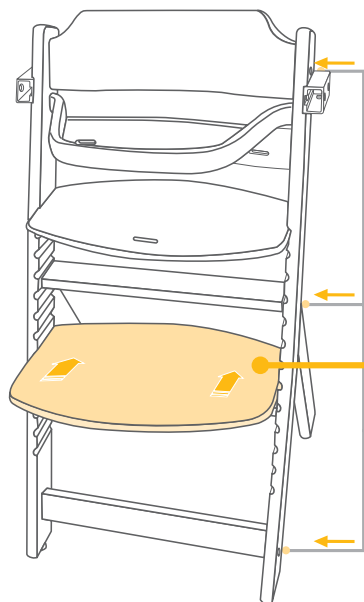
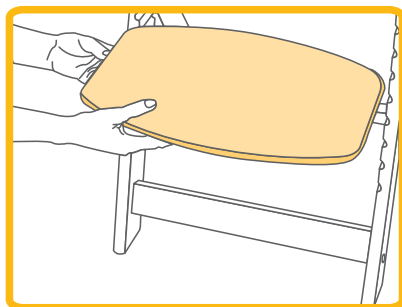
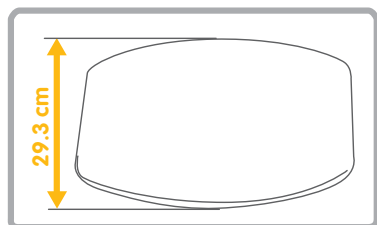
X NO



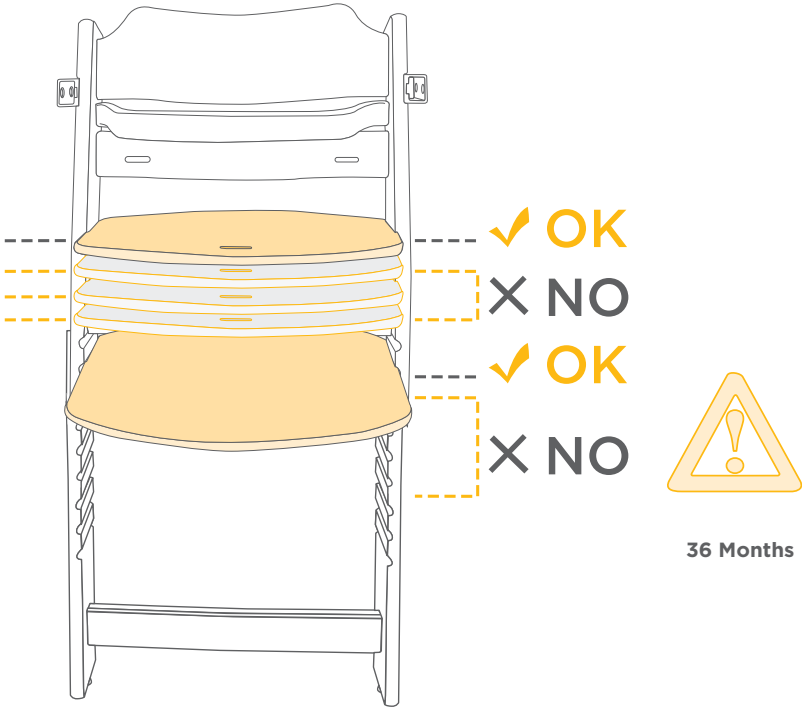
✓ OK



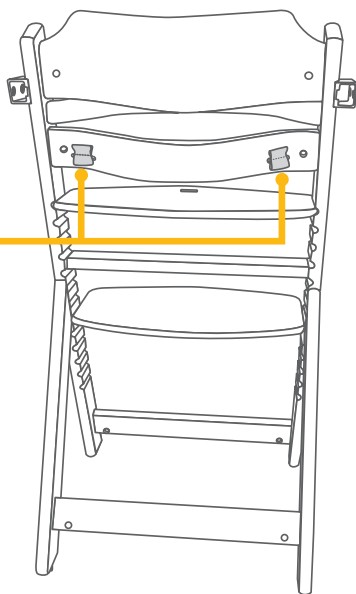
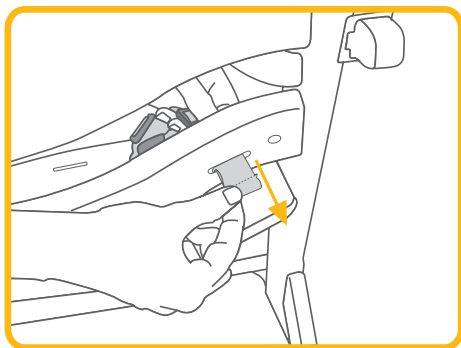
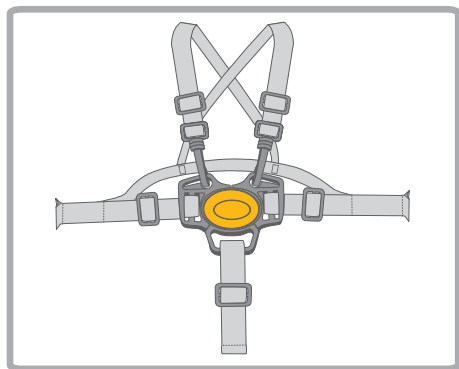
Using the Highchair



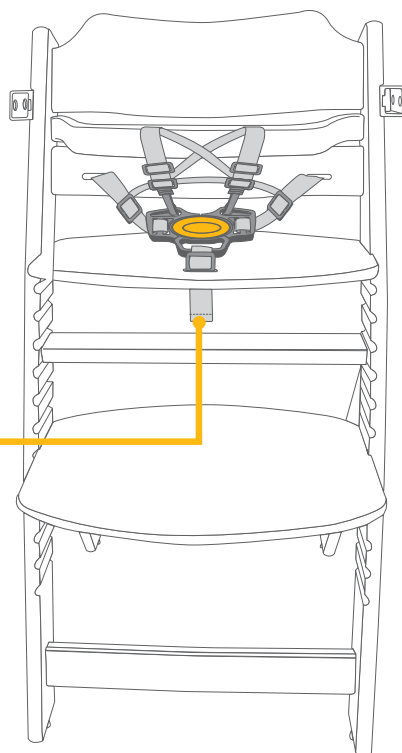
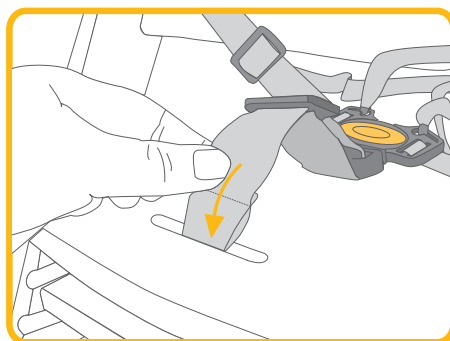
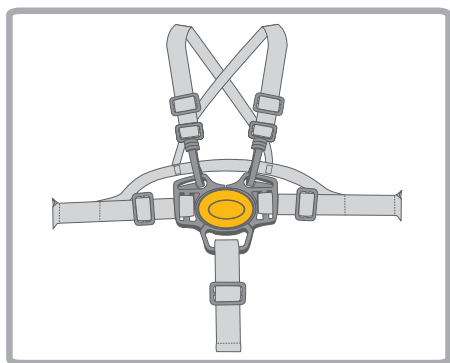
Using the Highchair



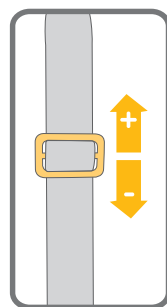
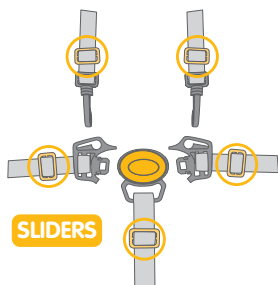
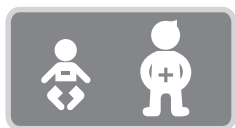
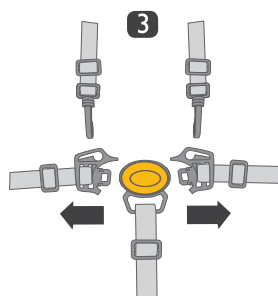
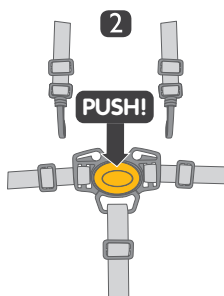
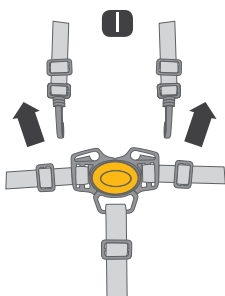
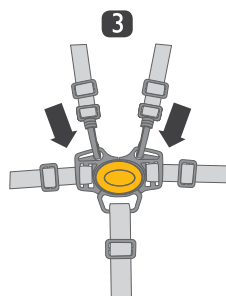
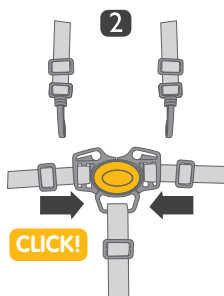
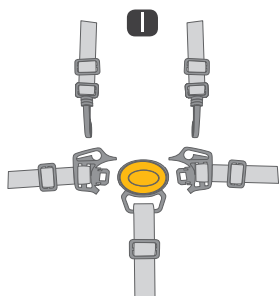
Using the Highchair



Using the Highchair



Using the Highchair



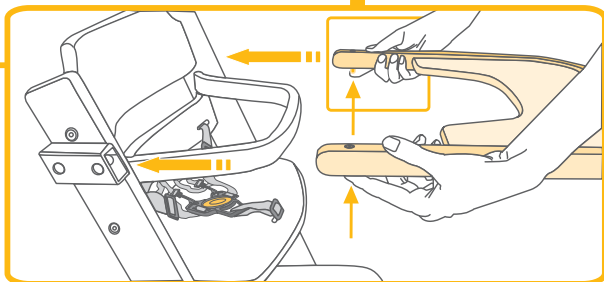
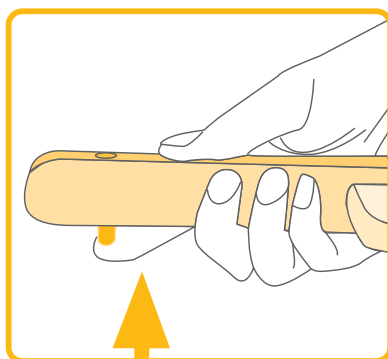
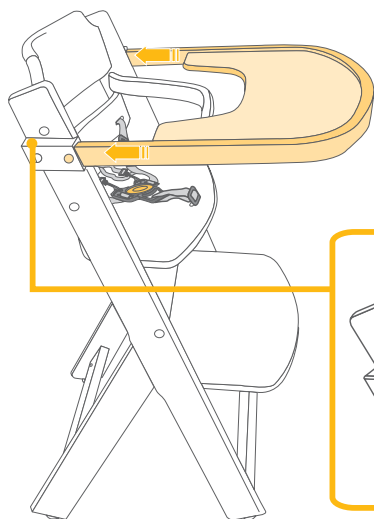
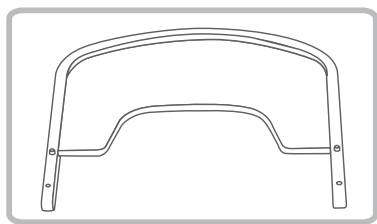
WARNING

Use this harness at all times.

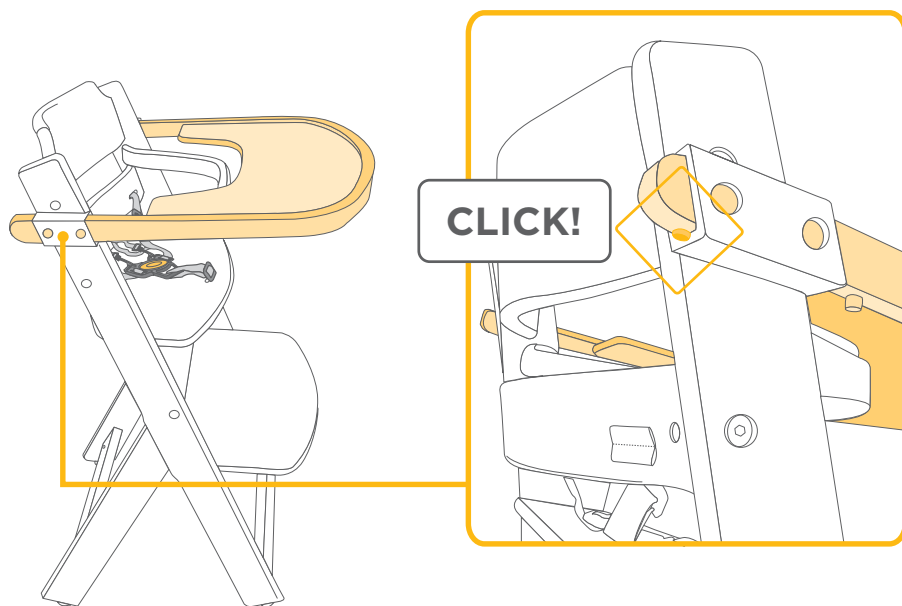
A five-point harness is provided to secure your child.

When not in use disconnect shoulder straps from the waist strap and buckle

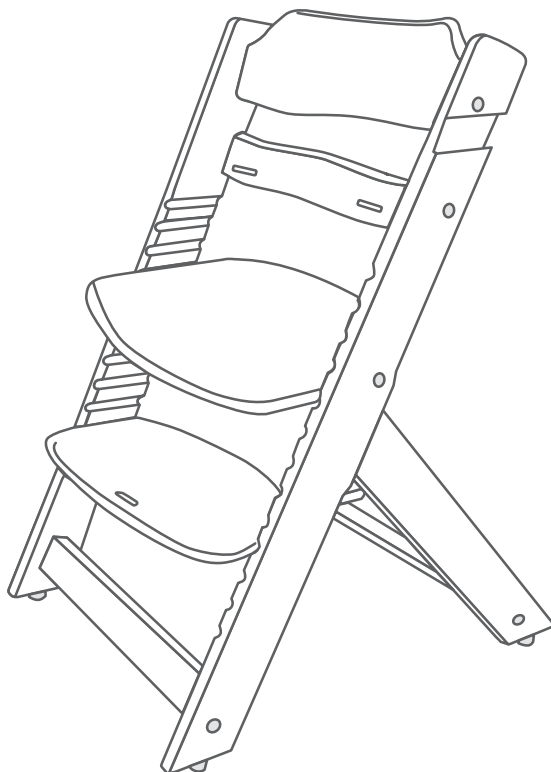
Using the Highchair



Using the Highchair

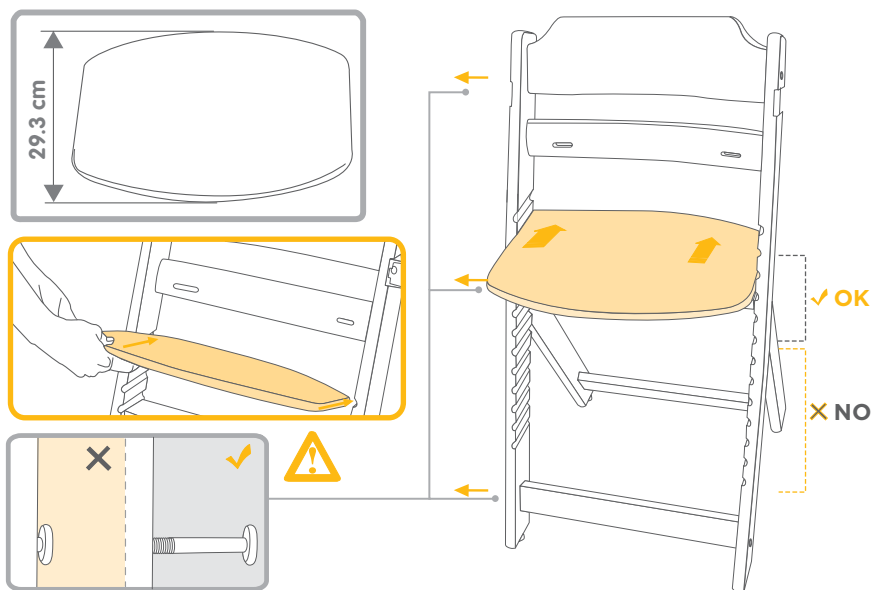


15kg - 30kg

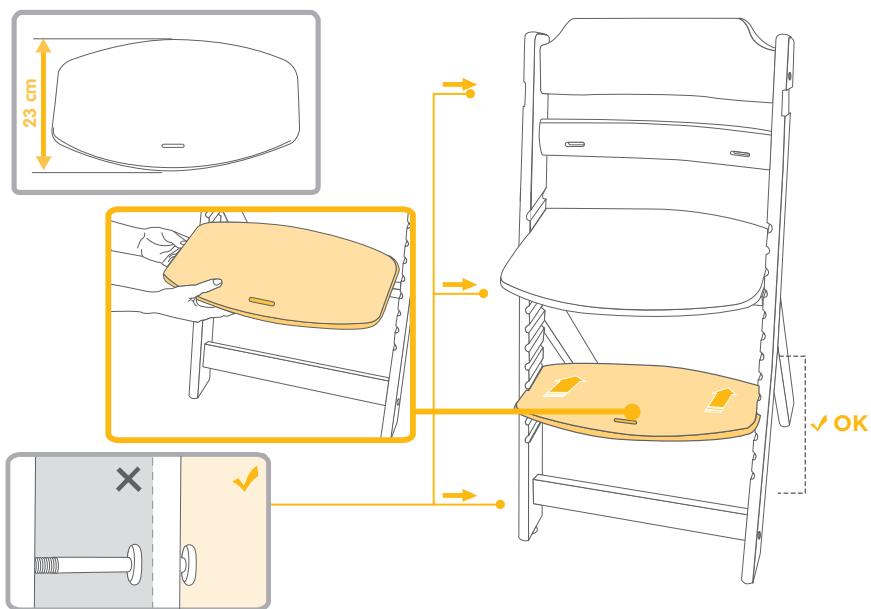


Safety harness may be removed **ONLY** after child is 15kgs
(approximatey 3 years old)

Using the Highchair



Using the Highchair



CARE AND MAINTENANCE

- Remember that all mechanical products need regular maintenance and careful use if they are to provide maximum satisfaction and last a long time.
- Wipe with a clean damp, wipe off excess of water with a dry cloth.
- Moisture will crack stain.
- We do not recommend the use of any detergent or micro fibre cloth.
- Colours may change if the chair is exposed to the sun.

Notes

[illegible]

safety1st.com.au

DOREL AUSTRALIA PTY LTD
655-685 Somerville Road
Sunshine West Victoria 3020
Email: customerservice@dorel.com.au
Phone: 1300 809 526
Hours: 8:30 am - 5:00 pm
Monday to Friday

IGC DOREL NEW ZEALAND LTD
14 Sir William Avenue
East Tamaki Auckland 2013
Email: customerservice@igc.co.nz
Phone: 0800 628 000 (toll free)
Hours: 8:00 am - 5:00 pm
Monday to Friday



Specifications are subject to change without notice.
Copy or reproduction without permission is prohibited.
© 2017 Dorel Australia Pty Ltd. All Rights Reserved.

www.dorel.com.au